



The
Incubation
Network

Guide to

Mentoring With The Incubation Network

Learn more here →

An underwater photograph showing a clear blue sea with a coral reef on the bottom. A transparent plastic bag is floating near the surface, partially obscuring the view of the reef. A large, stylized circular graphic, split into a light blue upper half and an orange lower half, is positioned behind the title.

Contents

01 [About The Incubation Network](#)

02 [Roles & Expectations](#)

03 [Engagement Types](#)

04 [Support for Mentors](#)

05 [FAQs](#)

06 [How to Apply](#)



Introduction

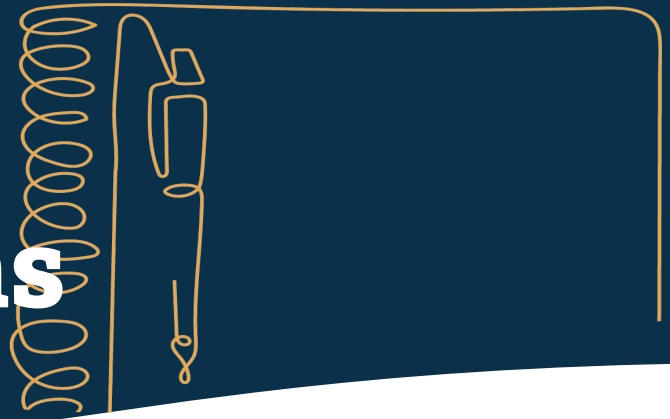
About Us

The Incubation Network is an impact-driven initiative that *[sources, supports and scales holistic innovative solutions to combat plastic pollution](#)* through strengthening entrepreneurial ecosystems with a diverse network of key partners.

Part of a highly *[collaborative community of innovators, investors, partners and programs](#)*, The Incubation Network works together with industry players to tackle key barriers to address plastic leakage and advance a circular economy in South and Southeast Asia. Our member network consists of various ecosystem builders and startups with a shared goal to reduce plastic waste in the region.

The Incubation Network is a partnership between non-profit organization, *[The Circulate Initiative \(TCI\)](#)* and impact innovation company, *[SecondMuse](#)*. TCI acts as the knowledge partner by supporting The Incubation Network with research, measurement, and resources; while SecondMuse powers The Incubation Network program as an ecosystem partner.

Role & Expectations



As a mentor, you will...

- **Provide guidance.** The primary role of a Mentor is to provide guidance to entrepreneurs and growing businesses by listening, advising, and giving support on specific areas of need.
- **Identify needs.** Be a critical peer and a sounding board, exploring areas of growth together.
- **Grow connections.** Help entrepreneurs and growing businesses to expand their network and find the right collaborators in the region.

This might look like...

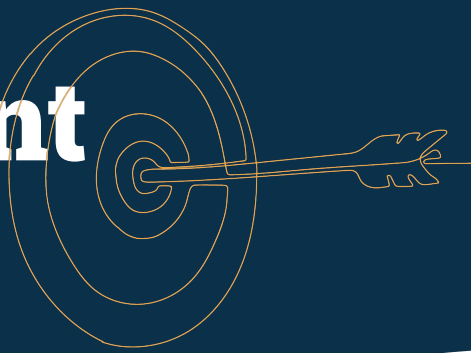
- Reviewing the team's business and revenue models
- Acting as a technical consultant
- Providing insights on local markets in South, Southeast Asia
- Sharing insights from corporate perspectives
- Providing guidance and feedback on the team's deliverables
- Connecting the team with relevant key stakeholders, potential partners

Time commitment

Lengths of each mentorship will depend on the type of engagement (e.g. cohort programs ad-hoc support requests).

Incubator/Accelerator program mentorships typically require a commitment of 8 weeks while ad-hoc support requests may only require an one-time consultation.

Engagement Types



Entrepreneurs in our network strive to build solutions to improve waste management and plastics value chains. Mentorship of entrepreneurs and growing businesses is a critical part of solving this issue – *getting ahead of pitfalls and opportunities before they happen.*

Ways to Engage:



Ad-hoc Support for Startups and Growing Businesses

Our doors are always open to mentors throughout the year. In response to requests, we connect our startups with experienced professionals in our network to provide ad-hoc support.



Program-specific Mentorship Support

We also invite experts as mentors to our annual incubation/acceleration programs. The programs run over a period of few months and mentors get a chance to hold close 1:1 relationships with the startups as they grow.



Referral to our Ecosystem Builder Members

Our Ecosystem Builder Members host multiple entrepreneur support programs throughout the year and invites The Incubation Network Mentors to join as critical peers.

Support for Mentors

Support provided to Mentors will vary based on the specific engagement/program that Mentors are selected for.

However, the general support provided will include:



Administrative Support

At any point during the mentorship, if mentors need administrative support in areas such as onboarding, training materials, program materials or contractual clarifications, our team will be able to provide ongoing support.



Mentor Resource Library

We are keen to learn from each other and collectively share resources that may be helpful for the Mentor community. If you have any resources (publications, tools, website, articles, etc.) that have influenced your work positively, please share with us [here](#)! Browse the resource library [here](#).



Regular check-ins and surveys

We are committed to ensuring that the mentor and mentee feedback is consistently captured and improved upon. Throughout the mentoring journey, mentors can expect regular check-in calls with their TIN point of contact as well as surveys to provide feedback.



FAQ



Q: *How much time do I need to commit?*

A: Mentorship engagements can last from a few weeks to a few months, depending on program and mentee requirements. This will be scoped out beforehand. During the engagement period you can expect up to meet with your mentee at least once a week. It may vary depending on the level of depth developed with the mentee. The engagement can be in person, or remote via video call, or a combination of both.

Q: *What kind of mentees and teams will I be involved with?*

A: Most of our programs cater to early stage social enterprises and startups across our five countries (India, Indonesia, The Philippines, Vietnam, and Thailand).

Many of these enterprises and teams:

- Are at pre-seed or pre-revenue stages
- Have yet to pilot their solutions, or have conducted preliminary pilots
- Are still refining value propositions and target markets
- Have potentially scalable solutions that can be replicated and adapted in most countries where plastic pollution is an issue

Q: *Can I choose my mentee team?*

A: The The Incubation Network team will be matching mentors to a team based on the mentor's expertise and team's needs. For incubator/accelerator programs, we will sort the matches based on mentee and mentor preferences.

Q: *Do I need to be in the same country as my mentee team(s)?*

A: No. Depending on engagement requirements, and needs of the mentee team, our mentors can work with our innovators from wherever they happen to be in the world. While The Incubation Network focuses on 5 target countries (India, Indonesia, The Philippines, Thailand, Vietnam), our program mentors bring invaluable insights and expertise from experience all over the world.

Q: *I've never worked with social enterprises before, this is a bit new to me. Am I still eligible?*

A: Absolutely. The world of social enterprise startups is very different to the corporate world, but there are things than each can learn from the other. Skills and expertise are transferable from one to the other, even if the framing changes.

Q: *Is this a paid engagement?*

A: Some engagements may have a stipend allocation for mentors involved.

Next Steps

How to Join Us As A Mentor

1. Fill out our [Mentor Application](#)
2. Meet us 1:1 via call
3. Onboard our network!

Email us at
membersupport@incubationnetwork.com
if you have any questions!